



Moselle Development Agency at your side

Moselle Development Agency is the economic development unit set up by the Moselle Department Council to provide the following services :

- international economic promotion of Moselle, marketing the area,
- prospection and search for investors in France and abroad; international offices in Barcelona, Brussels, Düsseldorf and Milan,
- customized reception and guidance for location of new businesses,
- support for Moselle businesses and setting-up of financial aid packages,
- development, organization and running of networks of excellence.

Web site : moselle-developpement.com



MOSELLE DEVELOPPEMENT

Hôtel du Département
1 rue du Pont Moreau - B.P. 40567
F-57010 METZ CEDEX 1
Tel. : +33 (0) 3 87 30 82 31
Fax : +33 (0) 3 87 30 55 21
Internet site : www.moselle-developpement.com
E-mail : contact@moselle-developpement.com

Managing Director : Viviane TOUSSAINT
Programme managers : Louis EXERTIER, Daniel KNOEPFFLER, Stéphane MARCHAL, Thierry PETRY, Jean-Paul SCHMITT, Martine WELTZER
Communication manager : Pascale VIBERT
Accounting and personnel : Danielle KOCHERT
Secretariat : Joëlle BENJELLOUN, Rachel LABBADI, Silvia PERNET, Angela SCHOL.



GERMANY

Thomas KLEMENT
CAPEM Wirtschaftsförderung Moselle
Königsallee 14
D-40212 DÜSSELDORF
Tel. +49 (0) 211 138 66 489
Fax +49 (0) 211 138 66 77
Email : thomas.klement@capem.de



BELGIUM

Rudi DIEUSAERT
MOSELLE DEVELOPMENT
Espace Moselle - 40 rue des Drapiers
B-1050 BRUSSELS
Tel. : +32 (0) 25 02 69 02
Fax : +32 (0) 25 12 92 19
E-mail : moselle-developpement@telenet.be



ITALY

Maria-Rosa ROMBOLA
CAPEM ITALIA - Regione Lorena
C/O A&B Srl
Via Valla, 16
I-20141 MILANO
Tel. : +39 (0) 28 47 42 370
Fax : +39 (0) 28 47 42 371
E-mail : capemm@lorena-frit
www.lorena-frit



SPAIN

David AGUINAGA ABAD
MOSELLE DEVELOPMENT
c/Provença, 238, 5º 4a
E-08008 BARCELONA
Tel. : +34(0) 934 510 339
Fax : +34(0) 934 518 735
E-mail : direccion@lorena-invest-francia.com
www.lorena-invest-francia.com



october 2006 - Photos credits and maps: Conseil Général de la Moselle (DRTE) - Moselle Développement /France - Valoris Lorraine - JC. Kanny (CDT) Moselle - Mairie de Montigny/les Metz - Lowweb - SMART France, SNCF

Farébersviller-Henriville and Illange-Bertrange departmental megazones, two sites unrivalled in Europe



“Two megazones to reach the whole world”

Moselle développement



Moselle, a strategic geographical position in Europe

- > The Moselle department in Lorraine occupies a privileged cross-border position.
- > It is an exceptional gateway to the major European markets.
- > Moselle: a population of more than a million in a market of 400 million consumers, with 50% of European GDP within a 600 km radius.



Two unrivalled hubs located in areas with high-quality labour forces

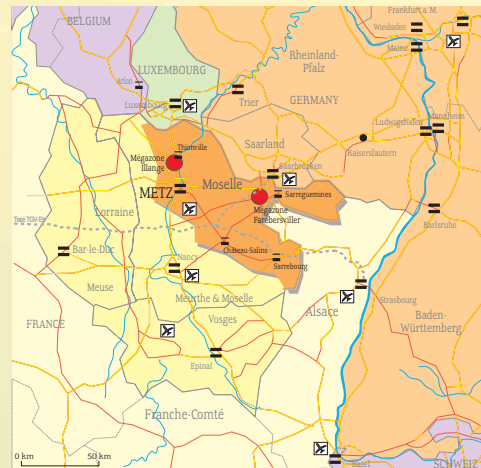
The Moselle labour force is young (more than one-third of the population is under 25) and its hard-working attitude is recognized both in France and abroad. The long industrial tradition of the region means that the labour force is used to factory work, operational very rapidly and familiar with shift work.

Illange-Bertrange megazone : THIONVILLE EMPLOYMENT AREA

Population : 500 000
 Density (pop/sq. km) : 244
 Active employed population : 200 000

Farébersviller-Henriville megazone : EASTERN MOSELLE EMPLOYMENT AREA

Population : 182 000
 Density (pop/sq. km) : 250
 Active employed population : 104 000



An attractive area with excellent infrastructure : the department council has supervised the building of the Moselle broadband network (RHD 57). Its 1,130 km of very high speed (15 megabit to 40 gigabit) optical fibres mean that the whole of Moselle benefits from high-performance telecommunications infrastructure and services. The success of the Moselle department is shown by a few figures: over 10 years (1995-2005), 20,400 promises of employment for 2.8 billion euros of investment in 500 projects. 40% of the investment is by foreign companies. They account for 60% of the new jobs created each year.



An exceptional economic environment

The Farébersviller-Henriville megazone is located near the Freyming-Merlebach community business park.

Company name	Location	Business	Workforce
VOIT France	Farébersviller	Aluminium foundry	210
PILKINGTON	Farébersviller	Manufacture of special glass (float glass) and stamping shop	130
NIJMAN WINNEN	Farébersviller	Logistics hub	85
EMKA FRANCE	Farébersviller	Manufacture of locks and fittings	50
INTERVER SECURITE SA	Farébersviller	Manufacture of special glass	45
KATOEN NATIE FRANCE	Farébersviller	Tanker washing station - Logistics hub	40
INTERPANE GLASS COATING France	Farébersviller	Manufacture of coated glass	20
MAGNA	Mégazone	Vehicle chassis	350
SMART FRANCE - THYSSENKRUPP AUTOMOTIVE SYSTEMS FRANCE VDO FRANCE - MAGNA SYSTEMS CHASSIS/UNIPOINT - DYNAMIT NOBEL PANOPA LOGISTIQUE - MCT MLT MOSOLF	Hambach	Smart car assembly	850



Illange-Bertrange Departmental Megazone : a rail-road bimodal hub unique in Europe

A rich economic environment : MAIN BUSINESSES IN THE SECTOR



Areas available :
92.5 ha
available, in one block
(+ 60 ha on option)

Acquisition price :
21.87 euros ex VAT / m²

Site details :

Rectangular site, graded; no structure on the site. Land ownership under full control of the Moselle department. First improvement phase completed in 2006.

Location – road and rail access :

- location close to a motorway interchange : direct link via the Yutz south-eastern bypass to a junction on the A31 motorway
- rail access : branch planned from Kuntzig station.

Water/sewage infrastructure :

- **Rainwater** : 2 retention basins, each 21,000 m³, are being built to limit the runoff flow rate into the Thilbach stream to 200 l/s.
- **Wastewater** : construction of a sewer system - wastewater treatment in the Guénange intermunicipal treatment plant.
- **Industrial water** : to be treated on site by the company and specific network to be installed for discharge into the Moselle.
- **Drinking water supply** : water supply by the local water management body. The quantity and quality of domestic water are guaranteed by a 300 mm steel pipe passing close to the site. Available pressure: 13 bar availability of 4,000 m³/day with a peak flow rate of 6 l/second.

- **Firefighting** : 500 m³ reservoir to be built at the high point to supply the fire hydrants for 2 h at 60 m³/h (increase if necessary according to the specific needs of the business).
- **Industrial water supply** : by pumping of ground water or water from the Moselle after treatment.

Dry services infrastructure :

- **Electricity** : 2 x 225 kV line at the site boundary. To be installed: 63 kV transmission line from the Saint Aibert-Reinange line (3 km) and a 63 kV/20 kV transformer station.
- **Gas** : installation of a gas pipe (pressure 4 bar), including a regulator station to be built.
- **Telephone** : site supply from the existing network along the RD1 road.
- **Optical fibre** : connection to the main backbone (broad-band network, 15 megabits to 40 gigabits).

Company name	Location	Business	Workforce
EDF-CNPE	Cattenom	Nuclear electricity	1 100
SOLLAC	Florange	Steelmaking : flat products	4 000
THYSSEN KRUPP PRESTA FRANCE	Florange	Vehicle steering columns	900
LEMFOERDER	Florange	Vehicle safety parts	230
HERAEUS ELECTRONITE France	Illange	Temperature sensors	150
MICROSPIRE	Illange	Electronic components	100
ZENITEL WIRELESS	Illange	Industrial telecommunications	30
LORRAINE TUBES	Rettel	Large welded tubes	50
SOCIETE MOSELLANE DE MECANIQUE	Basse-Ham	Oil and water pumps (automotive)	300
SOCIETE MOSELLANE DE PISTONS	Basse-Ham	Pistons (automotive)	300
SOLOTRA- TRANSALLIANCE	Basse-Ham	Logistics hub	120
AKERS France	Thionville	Manufacture of rolling mill rollers	200
EUROSID	Thionville	Industrial piping	180
CEGELEC	Thionville	Electricity, automatic control	100
SOLBLANK	Uckange	Cutting and welding of vehicle panel blanks	200

The Illange-Bertrange megazone is also near the 450 ha Ennery-Trémery logistics hub.



Farébersviller-Henriville : a rare departmental megazone which has already attracted an international project



IGN

Site details :

1,200 m x 700 m - practically level grade (1 in 200 slope).
10 ha occupied by the Canadian company Magna Lorraine Emboutissage.

Location - road and rail access :

> a double motorway interchange 500 m from the megazone exits to the RD29 which overlooks the sites; road access is directly from the RD29 opposite the east interchange on the motorway.

> **rail access** : building of a terminal branch connecting to the Hargarten-Falck electrified railway line at Sarreguemines (adjoining).

Water/sewage infrastructure :

> **Rainwater** : a 1,200 mm diameter system discharges into two retention basins preceded by a pollution storage basin.

> **Wastewater** : 300 mm diameter pipes connect to the existing wastewater system near the zone. The wastewater is treated by the treatment plant of the local water management body.

> **Industrial water** : removal of industrial wastewater and any effluent may be subject to pre-treatment. The design and capacity of the system installed will be determined by the industrial project studies (classified installations, water act submission).

Available improved areas :
57 ha
in a single block (zone A)

Acquisition cost :
15.80 euros ex VAT / m²

> **Drinking water supply** : construction of the drinking water supply from the existing system along the RD29 and capacity increase.

> **Firefighting** : a 1,000 m³ reservoir providing a flow rate of 400 Nm³/h for 2 hours is under construction.

Dry services infrastructure :

> **Electricity** : construction of a 63 kV line from a source substation located 6,600 m from the megazone and on-site 20 kV grid.

> **Gas** : supply line from the Saint-Avold-Sarreguemines feeder, distribution grid designed for a flow rate of about 1,000 Nm³/h.

> **Telephone** : connection to the existing network along the RD29.

> **Optical fibre** : connection to the main backbone (broadband network, 15 megabits to 40 gigabits).

Geotechnical data :

mainly marls and clays of various colours, grey and grey-green.

Two megazones with excellent communication infrastructure



Road links :

The two megazones are located close to major motorway interchanges providing access to :

> Luxembourg, Belgium and northern Germany from Illange-Bertrange

> Germany, Switzerland and Italy from Farébersviller-Henriville.

And the A4 and A31 motorways provide rapid access to Paris, Lyon and Marseille.

Air links

The two megazones are less than half an hour away from large airports: Luxembourg-Findel for Illange, Saarbrücken-Ensheim for Farébersviller.

They are also close to major international airports such as Brussels, Paris and Frankfurt.

Freight can be shipped by Cargolux from Luxembourg-Findel or from Hahn in Germany.



Distance - in km - from the Farébersviller-Henriville megazone to major airports
Distance - in km - from the Illange-Bertrange megazone to major airports
Source : UCCEGA, Airports Council International 2003 © VALORIS Lorraine, 2006

Rail links

In June 2007 the TGV EAST EUROPEAN high-speed train will link four European countries: France, Germany, Switzerland and Luxembourg. With 12 TGV stations in Lorraine (including 3 in Moselle near the two megazones : Metz, Thionville and Forbach), and a 20% increase in regional express services, eastern France is opening up to the rest of France and to Europe.

